

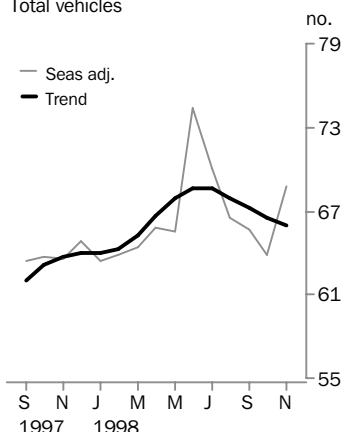
NEW MOTOR VEHICLE REGISTRATIONS

AUSTRALIA
PRELIMINARY

EMBARGO: 11:30AM (CANBERRA TIME) THURS 24 DEC 1998

New vehicle registrations

Total vehicles



NOVEMBER KEY FIGURES

TREND ESTIMATES

	Nov 1998	% change Oct 1998 to Nov 1998	% change Nov 1997 to Nov 1998
Total new motor vehicle registrations	65 973	-0.8	3.5
Passenger vehicles	55 306	-1.1	1.7
Other vehicles	10 666	1.0	13.8

SEASONALLY ADJUSTED

	Nov 1998	% change Oct 1998 to Nov 1998	% change Nov 1997 to Nov 1998
Total new motor vehicle registrations	68 712	7.6	8.1
Passenger vehicles	57 625	7.8	5.6
Other vehicles	11 087	6.3	23.4

ORIGINAL ESTIMATES

	Nov 1998	% change Oct 1998 to Nov 1998	% change Nov 1997 to Nov 1998
Total new motor vehicle registrations	67 998	5.2	10.6
Passenger vehicles	57 311	4.9	8.2
Other vehicles	10 687	7.0	25.4

NOVEMBER KEY POINTS

TREND ESTIMATES

- The trend for new motor vehicle registrations has fallen this month by 0.8%. This continues the downward trend over the last five months since the record high in June 1998. Registrations of passenger vehicles in November 1998 fell by 1.1% and other vehicles rose by 1.0% compared with last month.

TAKE CARE!
Trend estimates are revised as new monthly data become available.

SEASONALLY ADJUSTED ESTIMATES

- Seasonally adjusted new motor vehicle registrations for November 1998 increased by 7.6%. Registrations of passenger vehicles rose by 7.8% and other vehicles by 6.3%.

ORIGINAL ESTIMATES

- Total new motor vehicle registrations increased by 5.2% this month compared with October 1998. Passenger vehicle registrations rose by 4.9% and other vehicles rose by 7.0%.

- For further information about these and related statistics, contact Robin Walden on Brisbane 07 3222 6181, or any ABS office shown on the back cover of this publication.

NOTES

FORTHCOMING ISSUES

ISSUE	RELEASE DATE
December 1998	29 January 1999
January 1999	26 February 1999
February 1999	26 March 1999
March 1999	30 April 1999
April 1999	28 May 1999
May 1999	25 June 1999

.....

CHANGES IN THIS ISSUE

Northern Territory data was unavailable at the time of publishing and has been estimated for the month of November 1998.

This edition includes changes to the seasonally adjusted series and the trend estimate series as a result of the annual re-estimation of seasonal factors.

.....

TREND REVISIONS

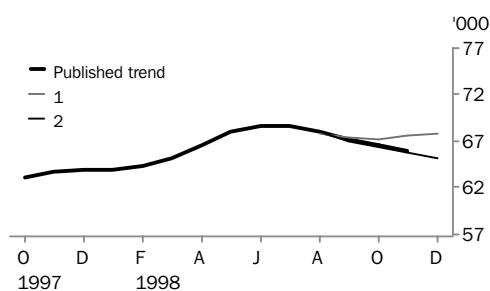
The most recent trend estimates are likely to be revised when new seasonally adjusted estimates become available.

The graph below presents the effect of two possible scenarios on the previous trend estimates:

- 1 The December seasonally adjusted estimate for total vehicle registrations is higher than the November seasonally adjusted estimate by 4.5%.
- 2 The December seasonally adjusted estimate for total vehicle registrations is lower than the November seasonally adjusted estimate by -4.5%.

The percentage change of 4.5% was chosen because the average absolute percentage change, based on the last 11 years, has been 4.5%.

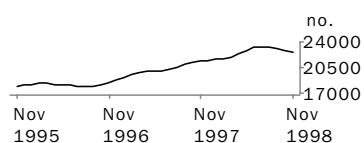
TAKE CARE!
Trend estimates are revised as new monthly data become available.



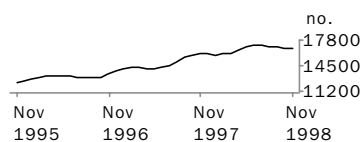
W. McLennan
Australian Statistician

VEHICLE REGISTRATIONS BY STATE: Trend series

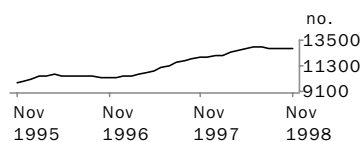
NEW SOUTH WALES



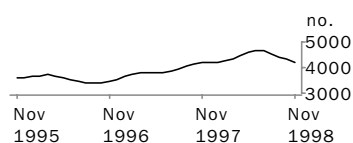
VICTORIA



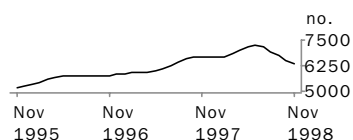
QUEENSLAND



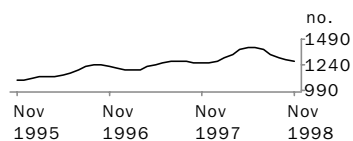
SOUTH AUSTRALIA



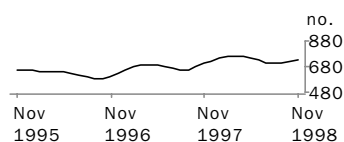
WESTERN AUSTRALIA



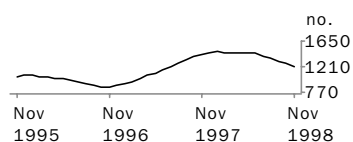
TASMANIA



NORTHERN TERRITORY



AUSTRALIAN CAPITAL TERRITORY



NEW MOTOR VEHICLES, Registrations By Type: All series(a)

Month	Passenger vehicles	Other vehicles	Total
ORIGINAL			
1997			
September	53 726	8 789	62 515
October	57 471	9 180	66 651
November	52 945	8 521	61 466
December	58 252	9 675	67 927
1998			
January	44 164	7 163	51 327
February	50 794	9 424	60 218
March	57 735	10 567	68 302
April	50 735	9 912	60 647
May	54 185	10 868	65 053
June	73 153	14 901	88 054
July	63 188	10 781	73 969
August	54 789	9 551	64 340
September	55 336	9 893	65 229
October	54 632	9 986	64 618
November	57 311	10 687	67 998
SEASONALLY ADJUSTED			
1997			
September	54 013	9 339	63 352
October	54 533	9 157	63 691
November	54 576	8 981	63 558
December	55 178	9 645	64 822
1998			
January	53 738	9 723	63 462
February	53 502	10 347	63 849
March	54 396	9 942	64 338
April	55 315	10 432	65 747
May	55 372	10 095	65 467
June	63 566	10 809	74 375
July	59 927	10 153	70 080
August	56 044	10 411	66 455
September	55 385	10 254	65 639
October	53 456	10 429	63 885
November	57 625	11 087	68 712
TREND ESTIMATES			
1997			
September	52 806	9 178	61 983
October	53 822	9 254	63 076
November	54 381	9 370	63 751
December	54 379	9 542	63 921
1998			
January	54 161	9 760	63 921
February	54 262	9 983	64 245
March	55 039	10 176	65 214
April	56 347	10 303	66 650
May	57 596	10 349	67 944
June	58 287	10 353	68 640
July	58 211	10 365	68 576
August	57 545	10 405	67 950
September	56 695	10 472	67 166
October	55 942	10 556	66 499
November	55 306	10 666	65 973

(a) Trend estimates for May 1998 to October 1998 have been revised.

NEW MOTOR VEHICLES, Registrations By Type: **Original**

Month	Passenger vehicles	Light commercial vehicles	Rigid trucks	Articulated trucks	Non-freight carrying trucks	Buses	Total (excludes motor cycles)	Motor cycles
1997								
September	53 726	7 172	881	308	140	288	62 515	2 101
October	57 471	7 311	952	425	151	341	66 651	2 850
November	52 945	6 927	891	328	120	255	61 466	2 452
December	58 252	7 926	1 019	351	103	276	67 927	2 549
1998								
January	44 164	6 068	562	197	42	294	51 327	2 181
February	50 794	7 909	859	270	77	309	60 218	2 231
March	57 735	8 800	994	354	85	334	68 302	2 123
April	50 735	8 153	1 003	341	105	310	60 647	2 185
May	54 185	9 031	1 038	353	101	345	65 053	2 013
June	73 153	12 702	1 275	418	104	402	88 054	2 145
July	63 188	8 760	1 178	372	110	361	73 969	2 333
August	54 789	7 700	1 040	413	85	313	64 340	2 276
September	55 336	8 012	1 132	327	127	295	65 229	2 681
October	54 632	7 987	1 077	401	176	345	64 618	2 692
November	57 311	8 839	1 095	360	104	289	67 998	2 944

NEW MOTOR VEHICLES, Registrations By State: All series(a)

Month	New South Wales	Victoria	Queensland	South Australia	Western Australia	Tasmania	Northern Territory	Australian Capital Territory	Australia
ORIGINAL									
1997									
September	21 330	15 552	11 712	4 174	6 297	1 503	632	1 315	62 515
October	21 813	17 462	11 998	4 335	7 489	1 387	712	1 455	66 651
November	21 056	15 252	11 265	4 199	6 533	1 108	619	1 434	61 466
December	21 879	17 038	13 152	4 483	6 977	2 153	644	1 601	67 927
1998									
January	17 342	12 273	9 884	3 366	5 862	925	574	1 101	51 327
February	20 840	14 996	11 176	3 980	6 290	1 007	641	1 288	60 218
March	23 659	17 029	12 646	4 348	6 959	1 224	873	1 564	68 302
April	20 571	14 962	11 760	4 063	6 190	1 033	750	1 318	60 647
May	22 357	16 074	11 489	4 379	7 456	1 242	784	1 272	65 053
June	29 143	21 013	18 552	5 761	8 977	1 600	1 212	1 796	88 054
July	25 440	18 620	13 800	5 092	7 239	1 497	648	1 633	73 969
August	21 692	16 286	12 018	4 540	6 386	1 351	638	1 429	64 340
September	22 314	16 597	12 434	4 166	6 378	1 496	606	1 238	65 229
October	21 881	16 794	12 048	4 237	6 515	1 233	730	1 180	64 618
November	23 925	17 183	12 658	4 475	6 442	1 324	754	1 237	67 998
SEASONALLY ADJUSTED									
1997									
September	21 501	15 722	12 268	4 032	6 505	1 293	690	1 342	63 352
October	21 632	16 264	11 025	4 178	7 243	1 265	682	1 401	63 691
November	21 099	15 802	12 566	4 270	6 516	1 177	653	1 474	63 558
December	22 044	16 281	11 951	4 264	6 683	1 330	734	1 535	64 822
1998									
January	21 065	15 872	12 235	4 293	6 559	1 284	779	1 376	63 462
February	21 898	15 721	12 212	4 100	6 536	1 240	752	1 390	63 849
March	21 609	15 757	12 526	4 067	6 708	1 381	777	1 512	64 338
April	22 275	16 366	12 117	4 526	6 871	1 376	733	1 483	65 747
May	21 952	16 506	11 832	4 653	7 220	1 296	707	1 300	65 467
June	24 258	18 201	15 194	4 804	7 902	1 623	881	1 513	74 375
July	24 796	17 351	12 371	4 911	7 147	1 368	630	1 504	70 080
August	22 355	16 584	12 695	4 588	6 872	1 313	700	1 348	66 455
September	23 217	16 610	12 139	4 102	6 459	1 273	614	1 225	65 639
October	21 731	16 347	11 940	4 232	6 478	1 198	726	1 233	63 885
November	23 213	17 221	14 124	4 340	6 396	1 371	834	1 214	68 712
TREND ESTIMATES									
1997									
September	20 873	15 536	11 713	4 048	6 559	1 270	657	1 327	61 983
October	21 194	15 908	11 858	4 140	6 657	1 263	675	1 381	63 076
November	21 428	16 056	11 994	4 194	6 690	1 261	702	1 426	63 751
December	21 538	16 008	12 072	4 208	6 656	1 263	724	1 454	63 921
1998									
January	21 561	15 905	12 135	4 211	6 630	1 276	743	1 460	63 921
February	21 647	15 935	12 231	4 241	6 677	1 306	756	1 452	64 245
March	21 936	16 148	12 413	4 336	6 825	1 344	766	1 447	65 214
April	22 415	16 484	12 647	4 474	7 033	1 384	764	1 449	66 650
May	22 903	16 818	12 812	4 605	7 203	1 407	749	1 449	67 944
June	23 242	17 031	12 886	4 671	7 242	1 405	727	1 435	68 640
July	23 352	17 082	12 857	4 647	7 145	1 383	710	1 400	68 576
August	23 259	16 998	12 791	4 550	6 951	1 347	702	1 352	67 950
September	23 062	16 876	12 746	4 430	6 731	1 314	704	1 302	67 166
October	22 848	16 776	12 769	4 318	6 529	1 288	716	1 255	66 499
November	22 662	16 697	12 825	4 225	6 343	1 271	733	1 218	65 973

(a) Trend estimates for May 1998 to October 1998 have been revised.

NEW PASSENGER VEHICLES, Top Make/models: **Original**—November 1998

<i>Make/Model</i>	<i>New South Wales</i>	<i>Victoria</i>	<i>Queensland</i>	<i>South Australia</i>	<i>Western Australia</i>	<i>Tasmania</i>	<i>Northern Territory</i>	<i>Australian Capital Territory</i>	<i>Australia</i>
Toyota									
Camry/Vienta	1 373	779	587	149	340	140	49	49	3 466
Corolla	1 299	649	450	131	396	97	43	56	3 121
Starlet	579	342	285	94	85	22	34	30	1 471
Other	1 253	628	839	183	330	38	51	30	3 352
Total	4 504	2 398	2 161	557	1 151	297	177	165	11 410
Holden									
Commodore/Calais	2 683	2 541	1 200	710	746	132	41	173	8 226
Vectra	296	296	104	78	49	10	2	20	855
Barina	260	213	119	61	54	7	2	17	733
Other	352	364	213	77	109	22	8	15	1 160
Total	3 591	3 414	1 636	926	958	171	53	225	10 974
Ford									
Falcon/Fairmont	2 255	2 316	1 155	419	673	99	41	178	7 136
Festiva	469	394	382	130	155	28	8	25	1 591
Laser	216	181	131	31	50	20	3	10	642
Other	227	215	111	33	72	6	8	15	687
Total	3 167	3 106	1 779	613	950	153	60	228	10 056
Mitsubishi									
Magna	722	536	464	536	197	33	25	74	2 587
Lancer	385	327	270	76	99	17	18	40	1 232
Mirage	472	136	111	35	48	12	2	38	854
Other	264	132	164	69	71	12	9	12	733
Total	1 843	1 131	1 009	716	415	74	54	164	5 406
Hyundai									
Excel	829	536	473	177	412	59	27	38	2 551
Lantra	187	72	87	11	95	19	5	7	483
Sonata	160	103	59	17	34	9	5	4	391
Other	19	12	13	5	9		2	1	61
Total	1 195	723	632	210	550	87	39	50	3 486
Nissan									
Pulsar	579	426	242	74	160	41	20	41	1 583
Patrol	268	211	270	65	124	10	20	11	979
Maxima	61	74	41	7	10	2	2	7	204
Other	84	67	64	15	40	1	1	2	274
Total	992	778	617	161	334	54	43	61	3 040
Honda									
CRV	266	158	98	33	53	20	7	11	646
Civic	244	149	91	29	64	11	2	7	597
Accord	135	92	81	14	37	5	2	3	369
Other	108	62	28	13	24		2	5	242
Total	753	461	298	89	178	36	13	26	1 854

EXPLANATORY NOTES

INTRODUCTION

- 1** This publication presents monthly data for registrations of new motor vehicles.
- 2** The statistics in this publication use the Vehicle Identification Number (VIN), adopted by the State and Territory motor vehicle registration authorities. The information contained in the VIN allows more accurate classification of vehicles. In the case of some States, data processed using the VIN system are not strictly comparable with data processed prior to December 1990.

SCOPE AND COVERAGE

- 3** Motor vehicle registration statistics are obtained from State and Territory motor vehicle registration authorities. The statistics reflect information recorded in registration documents. With the exception of Queensland, the statistics do not depart significantly from actual registrations during the period. In the case of Queensland, a number of registrations processed in a month actually relate to vehicles registered prior to that month.
- 4** New motor vehicle registrations are obtained from New South Wales, Victoria, Queensland and Western Australia registration authorities on a weekly basis. Other registries provide data for each calendar month. The ABS processes the weekly registration data provided for the above-mentioned States and includes data for the relevant month in this publication. Data referring to the next month are withheld and included in the next month's publication. In some months, the ABS processes five weeks of data for the above States, while other months include four weeks of data. In months where five weeks of data are processed and depending on the actual pattern of registration processing, it is possible that there will be a greater number of registrations recorded because the carry forward from the previous month is likely to be greater than the carry over to the next month.
- 5** The scope of the statistics:
 - includes:
 - passenger vehicles
 - light commercial vehicles
 - trucks
 - buses
 - motorcycles (note: not included in totals)
 - vehicles with diplomatic and consular plates
 - State and Commonwealth owned vehicles
 - excludes:
 - vehicles belonging to the defence forces
 - recreation vehicles such as trail bikes and sand dune buggies (in those States where registration is required).

SEASONAL ADJUSTMENT

- 6** Seasonal adjustment is a means of removing the estimated effects of normal seasonal variation from the series so that the effects of other influences can be more clearly recognised.
- 7** Seasonal adjustment does not remove from the series the effect of irregular or non-seasonal influences (e.g. the introduction of new models, processing delays, industrial disputes).

EXPLANATORY NOTES

SEASONAL ADJUSTMENT *continued*

8 Irregular influences that are highly volatile can make it difficult to interpret the series even after adjustment for seasonal variation.

9 Extreme care should be exercised in using the seasonally adjusted series for new motor vehicle registrations in Tasmania, the Northern Territory and the Australian Capital Territory. The small numbers and volatile nature of these data makes reliable estimation of the seasonal pattern very difficult.

10 Seasonally adjusted series are calculated for the 'Passenger vehicles', 'Other vehicles' and 'Total vehicles' series for each State and Territory and are aggregated to obtain the total for Australia.

11 Seasonal adjustment factors are analysed and revised as necessary annually.

TREND ESTIMATES

12 The smoothing of seasonally adjusted series to create trend estimates reduces the impact of the irregular component of the seasonally adjusted series. The trend estimates are derived by applying a 13-term Henderson-weighted moving average to the respective seasonally adjusted series. These trend series are used to analyse the underlying behaviour of the series over time.

13 While this smoothing technique enables trend estimates to be produced for the latest month, it does result in revisions to the trend estimates for the most recent months as data for subsequent months become available. Generally subsequent revisions become smaller and after three months, usually have a negligible impact on the series. Changes in the original data and re-estimation of seasonal factors may also lead to revisions to the trend. For more information, see *A Guide to Interpreting Time Series—Monitoring 'Trends'—an Overview* (1348.0) or contact the Assistant Director, Time Series Analysis on (02) 6252 6345.

RELATED PUBLICATIONS

14 For a more detailed break-up of the monthly figures presented here, enquiries should be made to Robin Walden on 07 3222 6181 or to any ABS office. Data on total vehicle registrations, both new and re-registrations, is available in *Motor Vehicle Census, Australia, 31 October 1996* (9309.0).

SYMBOLS AND OTHER USAGES

n.p. not available for publication, but included in totals.

G L O S S A R Y

Articulated trucks	Vehicles constructed primarily for load carrying consisting of a prime mover having no significant load carrying area but with a turn table device which can be linked to a trailer. With or without a trailer the gross combination mass will be 3.5 tonnes or more.
Buses	Vehicles constructed for the carriage of passengers. Included are all passenger vehicles with 10 seats or more, including the driver's seat.
Light commercial vehicles	Describes goods carrying vehicles less than 3.5 tonnes gross vehicle mass. Included are utilities, panel vans, cab-chassis and forward control vehicles (whether four-wheel drive or not).
Motor cycles	Includes 2 and 3 wheeled mopeds, scooters, motor tricycles and motor cycles with side cars.
Non-freight carrying trucks	Includes specialist vehicles such as ambulances, mobile cranes or vehicles fitted with special purpose equipment and having no goods carrying capacity.
Passenger vehicles	Includes cars, station wagons, four-wheel drive passenger vehicles and forward control passenger vehicles with up to nine seats (including the driver).
Registrations	This includes all registrations processed by the motor vehicle registration authorities in the States and Territories during the relevant period.
Rigid trucks	Vehicles constructed primarily for load carrying with a gross vehicle mass of 3.5 tonnes or more.
VIN	The Vehicle Identification Number (VIN) uniquely identifies each vehicle. Embedded in the number are details of make and model together with other relevant information about the vehicle. The VIN is collected by the motor vehicle registration authorities at the time of registration.

SELF-HELP ACCESS TO STATISTICS

<i>PHONE</i>	Call 1900 986 400 for the latest statistics on CPI, Labour Force, Earnings, National Accounts, Balance of Payments and other topics (call cost is 75c per minute).
<i>INTERNET</i>	http://www.abs.gov.au
<i>LIBRARY</i>	A range of ABS publications is available from public and tertiary libraries Australia wide. Contact your nearest library to determine whether it has the ABS statistics you require.

WHY NOT SUBSCRIBE?

<i>PHONE</i>	+61 1300 366 323
<i>FAX</i>	+61 03 9615 7848

CONTACTING THE ABS

ABS provides a range of services, including: a telephone inquiry service; information consultancy tailored to your needs; survey, sample and questionnaire design; survey evaluation and methodological reviews; and statistical training.

<i>INQUIRIES</i>	<i>By phone</i>	<i>By fax</i>
Canberra	02 6252 6627	02 6253 1404
Sydney	02 9268 4611	02 9268 4668
Melbourne	03 9615 7755	03 9615 7798
Brisbane	07 3222 6351	07 3222 6283
Perth	08 9360 5140	08 9360 5955
Adelaide	08 8237 7100	08 8237 7566
Hobart	03 6222 5800	03 6222 5995
Darwin	08 8943 2111	08 8981 1218

<i>POST</i>	Client Services, ABS, PO Box 10, Belconnen, ACT 2616
<i>EMAIL</i>	client.services@abs.gov.au



2930100011980
ISSN 1323-4528

RRP \$15.00